



POWER TO THE
PARAGRAPH:
INTEGRATING EVIDENCE
ACROSS THE DISCIPLINES

Wafa Abedin and Emma Pottenger





OUTLINE

The Paragraph

Purpose

Elements

Type of Evidence

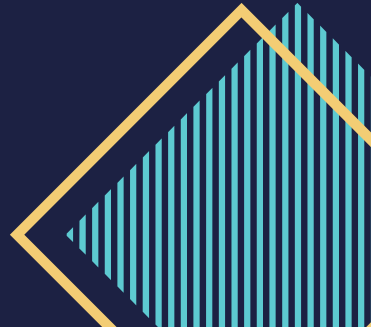
Summarizing

Paraphrasing

Quoting

Introducing Evidence

Writing Across the Disciplines






THE PURPOSE OF THE PARAGRAPH

SUBSTANTIATE

Your paragraphs are all in service of your thesis, and provide the evidence to support your overall argument.

ORGANIZE

Though they each express different ideas, paragraphs should guide the reader from one point to the next.



TOPIC SENTENCE

Communicates the main, thesis-driven point of the paragraph

BACKGROUND AND KEY TERMS

Explains concepts or terms that are necessary to understand the paragraph

EVIDENCE

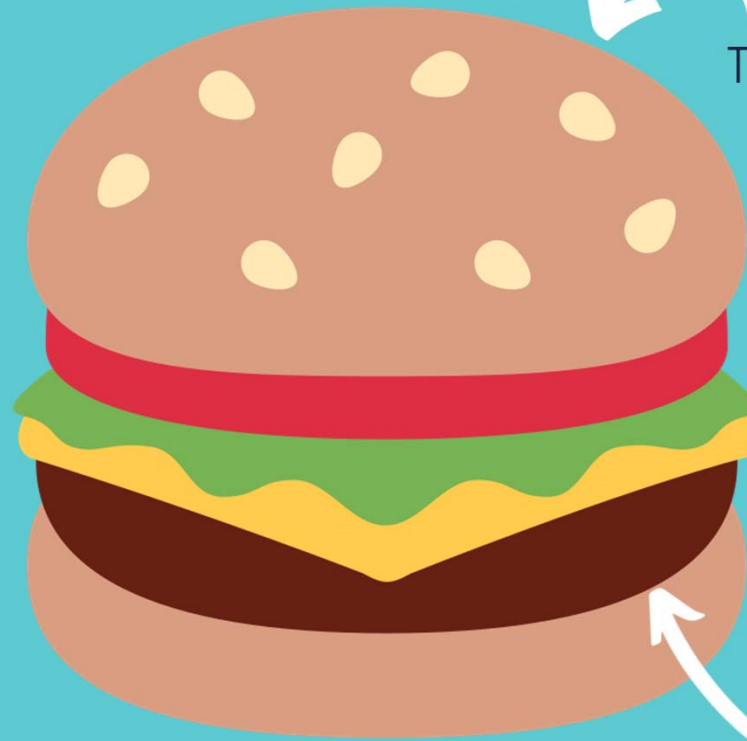
An example that supports the argument of the paragraph and consequently thesis

ANALYSIS

Your interpretation of the evidence and how it relates to the thesis

THE "PARAGRAPH BURGER"

EVERYTHING ELSE
IS THE ANALYSIS.
THIS IS THE
MAJORITY OF THE
PARAGRAPH



THE TOP BUN IS THE
TOPIC SENTENCE

THE LETTUCE IS
THE BACKGROUND
AND KEY TERMS.

THE CONDIMENTS
IS THE EVIDENCE. A
LITTLE GOES A
LONG WAY!

THE BOTTOM BUN IS THE
CONCLUDING SENTENCE

The background features a dark blue upper-left section and a teal lower-right section, separated by a diagonal line. Overlapping this line are two large, stylized geometric shapes. Each shape consists of a solid outline and a hatched interior. One shape is positioned in the upper right, and the other is in the lower left, creating a sense of depth and movement.

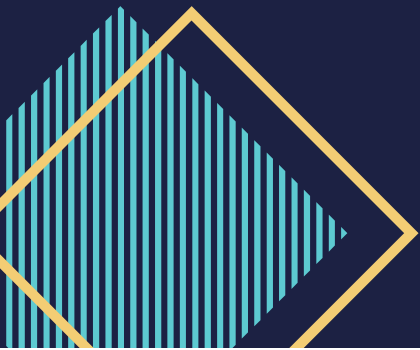
ACTIVITY #1

PARAGRAPH CHALLENGE

SUMMARIZING

- If details are irrelevant, or a source isn't important enough to warrant the space.
- If the main point is useful
- Avoid using dishonest oversimplification and unnecessary details
- Use the "slant"

TYPES OF
EVIDENCE



PARAPHRASING

- reporting what a source is saying but in your own words; don't leave out important details!
- may be shorter or longer than the original text
- shows how you understand the source

PARAPHRASING TIP:

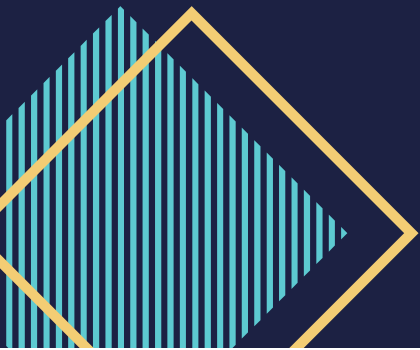
Read the text until you think you understand both the main idea and all the details/complexity. Then, say out loud how you would paraphrase the text to a classmate. Finally, write it in your draft!

QUOTING



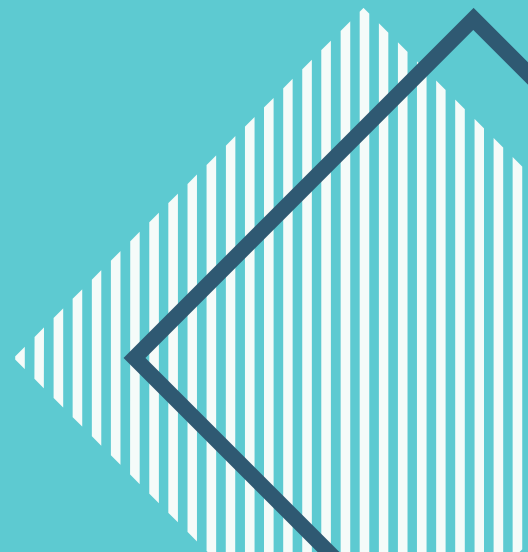
- The words themselves are your evidence
- Four or fewer lines: use run-in quotation
- More than four lines: use block quotation
- You can modify a quote to grammatically mesh with your sentence using [] or ...

TYPES OF
EVIDENCE



INTRODUCING EVIDENCE

- X states, ...
- According to X, ...
- X writes, ...
- In their book _____, X maintains that ...
- In X's view, ...
- X agrees/disagrees when they write, ...
- X complicates matters further when they write, ...



ACTIVITY #2

EVIDENCE
CHALLENGE

Q 1

Althusser says ideology "calls" out to us, enticing us to think of it as reality (450).

Althusser also claims that even though we do not realize we are within ideology, "it calls out to us, enticing us to misrecognize it as reality" (450).

Q 2

The Great Gatsby is the story of a mysterious millionaire, Jay Gatsby, who lives alone on an island in New York. F. Scott Fitzgerald wrote the book, but the narrator is Nick Carraway.

Nick is Gatsby's neighbor, and he chronicles the story of Gatsby and his circle of friends, beginning with his introduction to the strange man and ending with Gatsby's tragic death. In the story, Nick describes his environment through various colors, including green, white, and grey. Whereas white and grey symbolize false purity and decay respectively, the color green offers a symbol of hope.

In *The Great Gatsby*, F. Scott Fitzgerald provides readers with detailed descriptions of the area surrounding East Egg, New York. In fact, Nick Carraway's narration describes the setting with as much detail as the characters in the book. Nick's description of the colors in his environment presents the book's themes, symbolizing significant aspects of the post-World War I era. Whereas white and grey symbolize the false purity and decay of the 1920s, the cobalt green offers a symbol of hope.

Q 3

original text:

"In *The Sopranos*, the mob is plagued as much by inner infidelity as it is by the federal government.

Early in the series, the greatest threat to Tony's family is his own biological family. One of his closest associates turns witness for the FBI, his mother colludes with his uncle to contract a hit on Tony, and his kids click through Web sites that track the federal crackdown in Tony's gangland" (Walker 24).

paraphrased text:

In the first season of *The Sopranos*, Tony Soprano's mobster activities are more threatened by members of his biological family than by agents of the federal government. Tony's closest friend and associate is an FBI informant, his mother and uncle are conspiring to have him killed, and even his children are suspicious of his activities (Walker 24).



EVIDENCE IN THE SOCIAL SCIENCES

POLITICS

SOCIOLOGY

ECONOMICS

PSYCHOLOGY

- Test what you and others think against a review of evidence
- Qualitative or quantitative, it is discipline- and paper-specific.
- Does the assignment address theory or practice?

EVIDENCE IN THE HUMANITIES

- Use evidence as a strategy to beg for an interpretation or analysis
- Situate your evidence as a response to the alternative view

ENGLISH

HISTORY

CSLC

PHILOSOPHY

EVIDENCE IN THE SCIENCES

- Data are crucial
- Present prevailing theories and the hypothesis
- Explain the methods
- Summarize the findings
- Analysis may include explaining the findings, agreeing or disagreeing with methods or how the results may be interpreted etc.

MATH

CHEMISTRY

GEOLOGY



“to give writing the most important thing of all - namely a point - a writer needs to indicate clearly not only what his or her thesis is, but also what larger conversation that thesis is responding to”

- GERALD GRAFF AND CATHY BIRKENSTEIN



THANK YOU!

Stay on the lookout for more information on upcoming
Writing Center workshops.

WRITING CENTER IS OPEN
SUN-THURS FROM 7-11PM

You can also find additional resources on the wall
adjacent to the Writing Center or online under the
Writing Center Writing Resources tab.